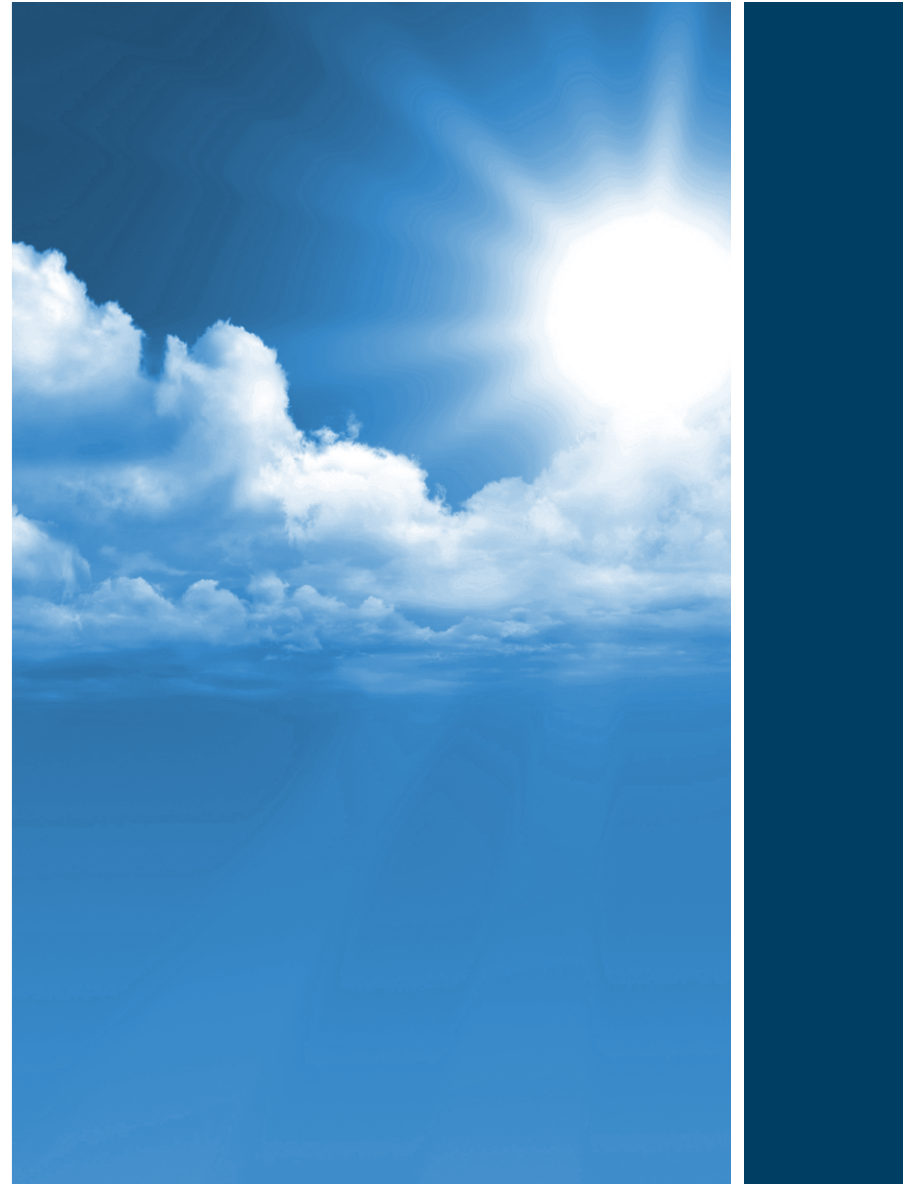


Clean Energy Solutions Center and LEDS GP

Transport Readiness for and Access to Climate Finance

September 17, 2013

Sean Esterly – Moderator
David Leipziger – World Resources Institute



Disclaimer

2

- *The Clean Energy Solutions Center does not endorse or recommend specific products or services. Information provided in this webinar is featured in the Solutions Center's resource library as one of many best practices resources reviewed and selected by technical experts*

Two Options for Audio (select audio mode):

1. *Listen through your computer.*

- Please select the “mic and speakers” radio button on the right hand audio pane display

2. *Listen by telephone.*

- Please select the “telephone” option in the right-hand display, and a phone number and PIN will display.

3. *Panelists - Please mute your audio device when not presenting*

4. *Technical Difficulties:*

- *Contact the GoToWebinars Help Desk: 888.259.3826*

Some housekeeping Items (continued)

4

To ask a question

- **Select the ‘questions’ pane on your screen and type in your question**

Having trouble viewing the webinar

- PDFs of the presentations can be accessed at
- <https://cleanenergysolutions.org/training/transport-readiness-climate-finance-access>

A video/audio recording of this Webinar and the slide decks will be made available at:

- <https://cleanenergysolutions.org/training/transport-readiness-climate-finance-access>

Agenda

5

- ✓ Welcome and Introductory Remarks
- ✓ Overview of the [Clean Energy Solutions Center](#)
- ✓ Overview of [Low Emissions Development Strategies Global Partnership](#)
 - **Sean Esterly:** National Renewable Energy Laboratory
- ✓ Presentation - Panelist:
 - **David Leipziger:** Transport and Climate Fellow, EMBARQ and CEP at World Resources Institute
- ✓ Question & Answer
- ✓ Survey
- ✓ Discussion and Closing Remarks

Clean Energy Ministerial & UN Partnership Supporting the Solutions Center

6

- Clean Energy Ministerial (CEM) launched the Clean Energy Solutions Center in April, 2011 for major economy countries
 - One of eleven CEM Initiatives
 - Led by Australia and U.S. with other CEM partners
- Partnership with UN-Energy is extending scope to support all developing countries
 - Enhance resources on policies relating to energy access, small to medium enterprises (SMEs), and financing programs
 - Offer expert policy assistance to all countries
 - Expand peer to peer learning and training



Clean Energy Solutions Center

<http://www.CleanEnergySolutions.org>

7

Goals

- Serve as a first-stop clearinghouse of clean energy policy resources.
- Share policy best practices, data, and analysis tools across countries.
- Deliver dynamic services that will enable expert assistance, learning, and peer to peer sharing of experiences
- Foster dialogue on emerging policy issues and innovation across the globe.

Target Audiences

- Primary:
 - Energy policy makers and advisors
 - Analysts
- Secondary:
 - Private sector companies,
 - Energy entrepreneurs and investors
 - Non Governmental Organizations
 - Civil society
 - Others engaged in clean energy



Ask an Expert: Our Experts in Action

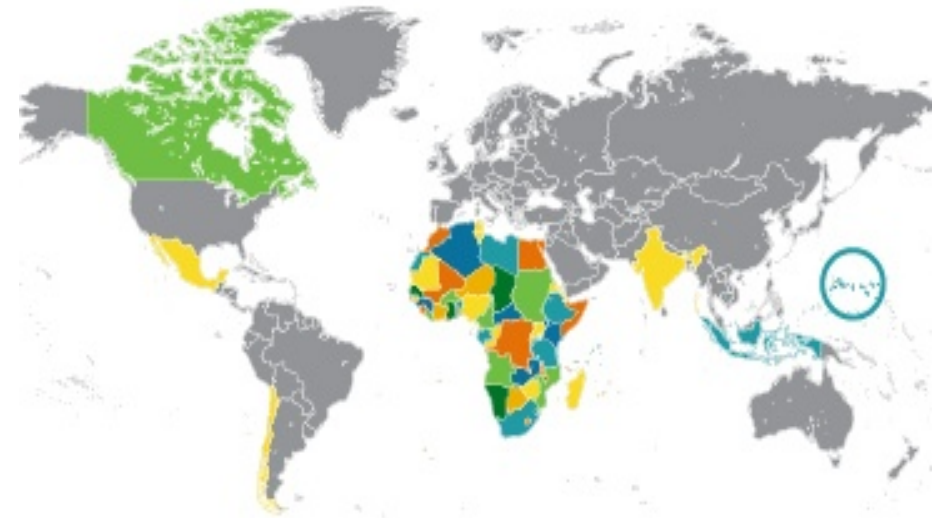
8



We connect you to a global network of energy experts for personalized attention and quick response technical assistance on **strategies, regulations, standards, financial incentives, and deployment programs** for a broad range of clean energy sectors and technologies including:



- Transportation
- Energy Access
- Energy Efficiency
- Renewable Energy
- Smart Grid
- Utilities



Requesting Assistance:

Register on <http://cleanenergysolutions.org/expert>

How You Can Get Involved

9

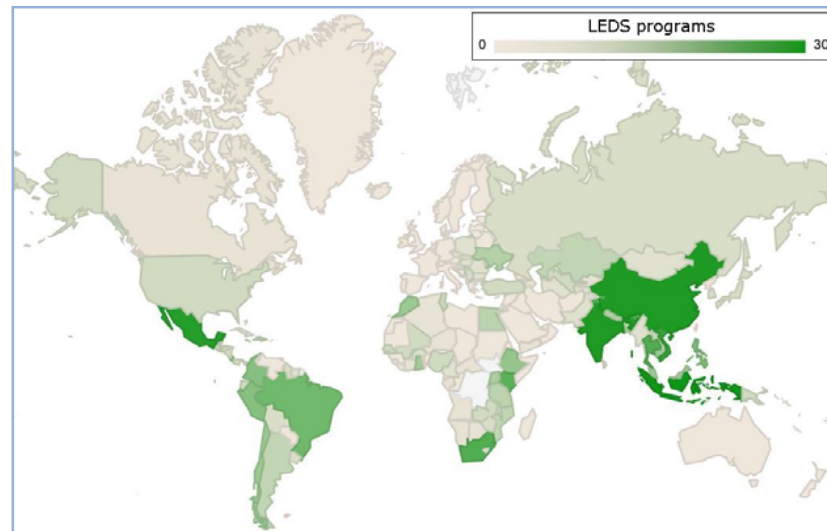
- Request expert assistance or tailored technical resources for your country
- Participate in webinars, training activities, and policy networks
- Offer advice and suggest resources to share
- Register for our newsletter





Low Emission Development Strategies Overview

The Low Emission Development Strategies (LEDS) Global Partnership is a partnership of more than 100 countries and international programs enhances coordination, information exchange, and cooperation to advance climate-resilient low emission growth.



Please visit www.ledsgp.org to learn more about the Partnership or to become a member.

David Leipziger: Transport and Climate Fellow, EMBARQ and CEP at the World Resources Institute

11



David Leipziger

David Leipziger is a Transport and Climate Fellow with the EMBARQ and CEP programs. His role analyzing the financing strategies and implementation of sustainable transportation initiatives in developing countries aims to bridge the gap between transport policy and climate change mitigation. He focuses in particular on private sector investment in low-carbon transport systems. Prior to joining WRI, David worked for the Institute for Market Transformation, a DC-based think tank concerned with market-based solutions to energy efficiency in the building sector. He managed research and program activities dedicated to assessing and stimulating demand for low-carbon buildings. David's research has been published by the Urban Land Institute, World Energy Engineering Congress, and European Council for an Energy Efficient Economy. He has previously worked in architecture and urban development in Washington, D.C., and Curitiba, Brazil.

Time for Q&A

12

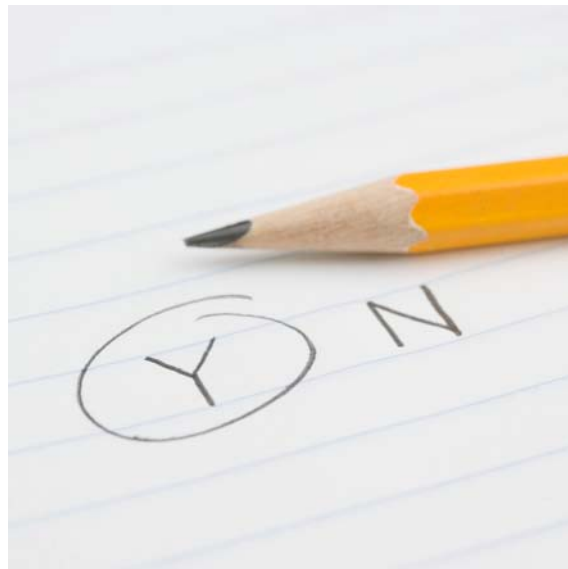
Questions



Survey

13

- How did we do?
- Your feedback is important!



Your participation is appreciated!

14

Thank you!

An audio recording of this Webinar will be available
following the webinar

Please visit:

<https://cleanenergysolutions.org/training/transport-readiness-climate-finance-access>