



**ALER** Associação  
Lusófona  
de Energias  
Renováveis



---

**UPDATE ON THE RENEWABLE ENERGY SECTOR IN  
MOZAMBIQUE – REPORT OUTLINE AND HIGHLIGHTS**

---

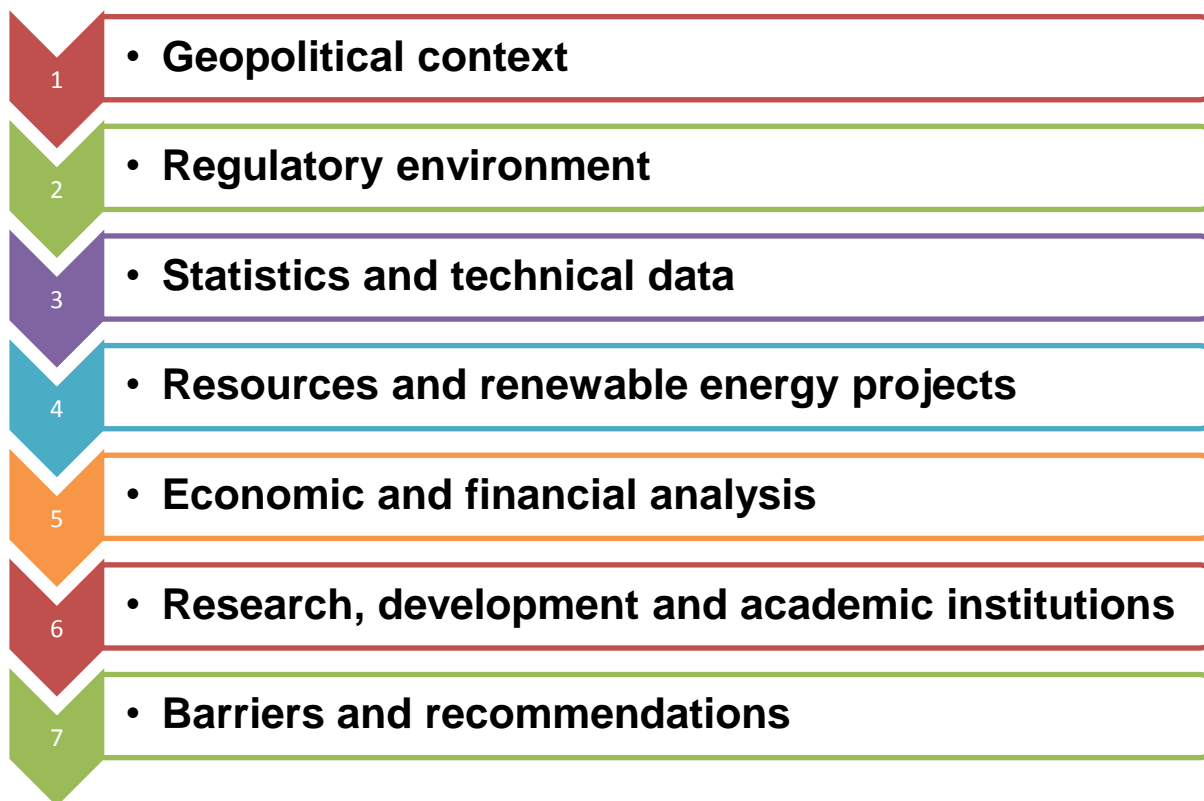
Boris Atanassov – UN Webinar– 15/12/2015



# The Renewable Energy Country Assessment and Update Report

An informative and comprehensive report which provides the user with a detailed update on the renewable energy sector in Mozambique.

The report focuses on the following key aspects:





## Project Team

---



- GreenLight is a Mozambican company operating since 2010 in the renewable energy and environmental consulting field
- GreenLight specialises in project management, research and development, environmental services and climate financing
- Projects are implemented at a national and regional level.



**Boris Atanassov**

Project director

[boris@greenlight-info.com](mailto:boris@greenlight-info.com)



**Nilza Matavel**

Senior researcher

[nilza.matavel@gmail.com](mailto:nilza.matavel@gmail.com)



**Ricardo Costa Pereira**

Renewable energy specialist

[aermozambique@gmail.com](mailto:aermozambique@gmail.com)



**Mayra Pereira**

Editor

[mayra@greenlight-info.com](mailto:mayra@greenlight-info.com)



# Methodology

---

## 1) Literature review

- Existing reports and publications
- Online research
- Company profile and data
- Legal framework
- National statistics

## 2) Stakeholder interviews

- National authorities
- Private sector
- Development organizations and donors
- NGO's
- Civil society
- Academic Institutions
- Members of ALER

## 3) Analysis of all information

## 4) Development of draft report

## 5) Review and feedback session by ALER committee of experts

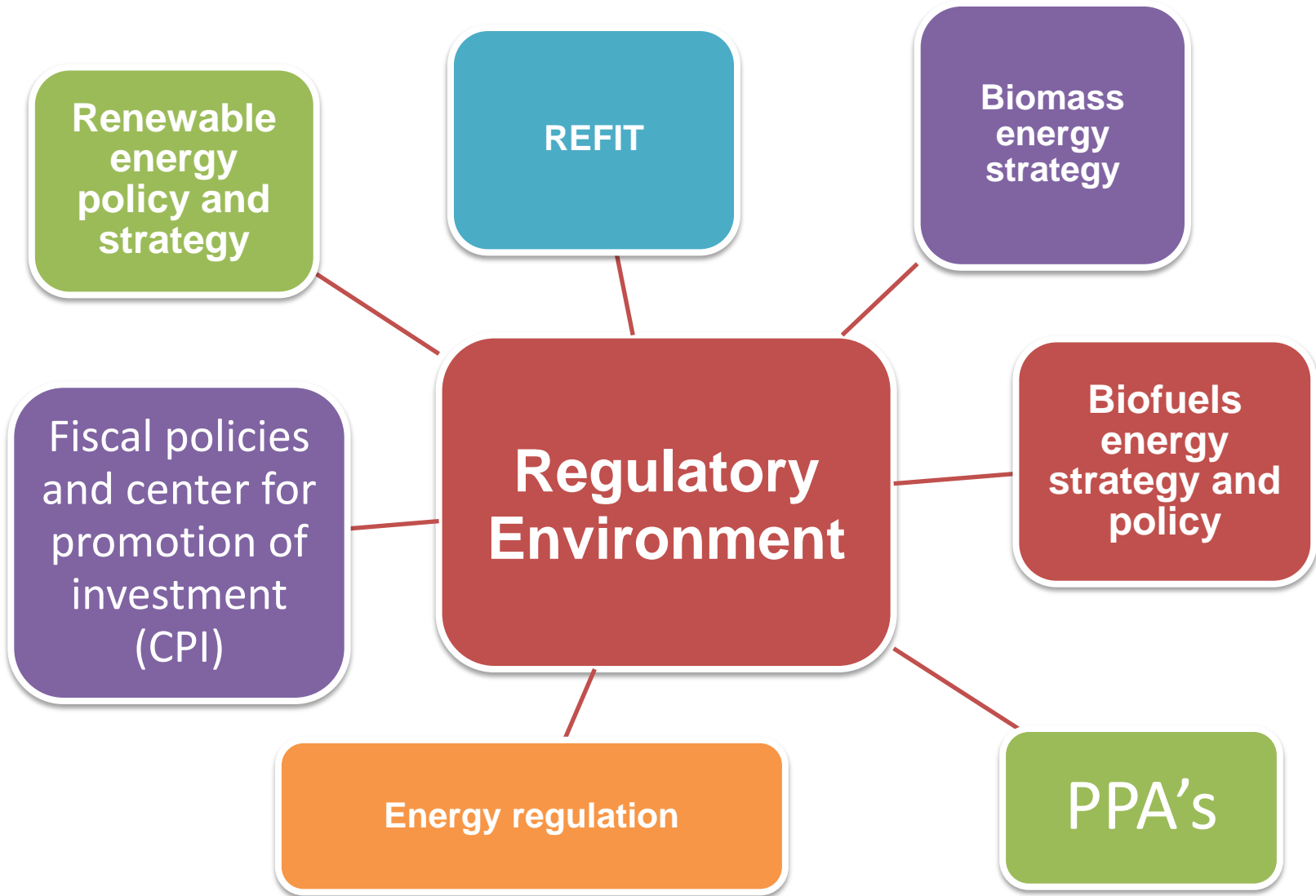
## 6) Submission of final report and directory of contacts



## Highlights from the report



# Regulatory environment





## National energy profile

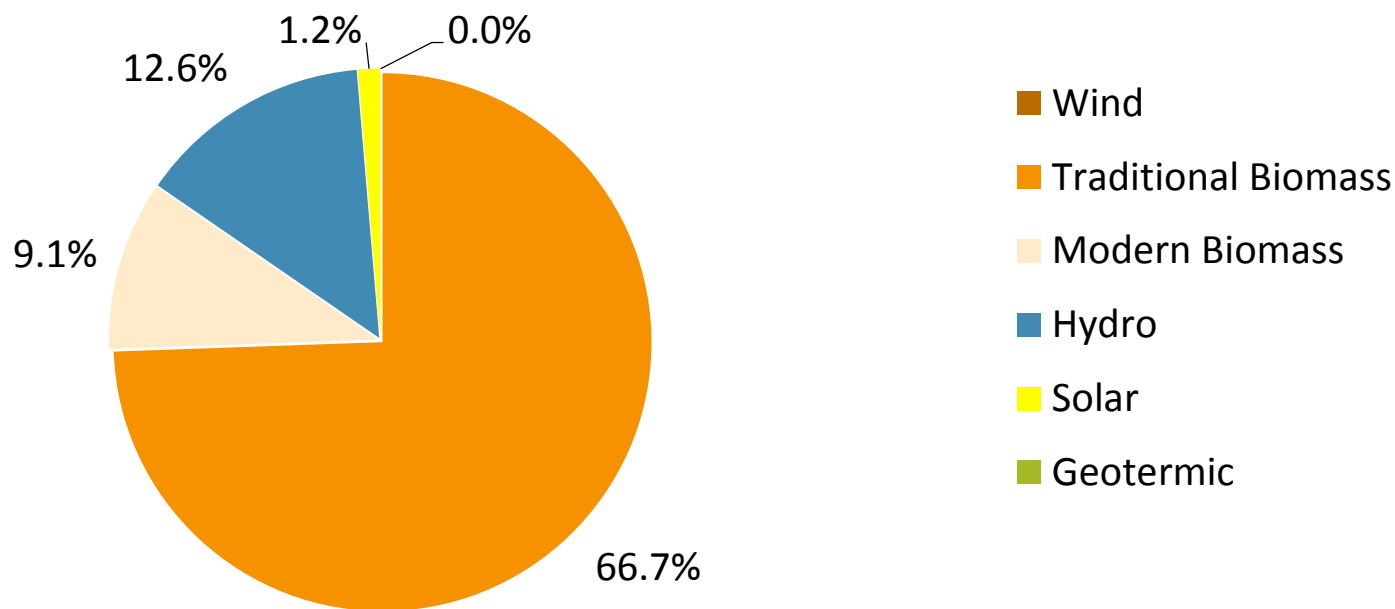
Indicator	Data
Total supply of primary energy	11102.4 (ktoe)
Electricity production	17,0 TWh
Per capita electricity consumption	453 kWh / per capita
Installed capacity for energy generation	2.428 MW
Electrification rate	25%
Population which makes use of biomass energy	+ 90%

Source: IAE, 2014



# Current Renewable Energy Matrix

## The contribution of renewable energy to the country primary energy mix

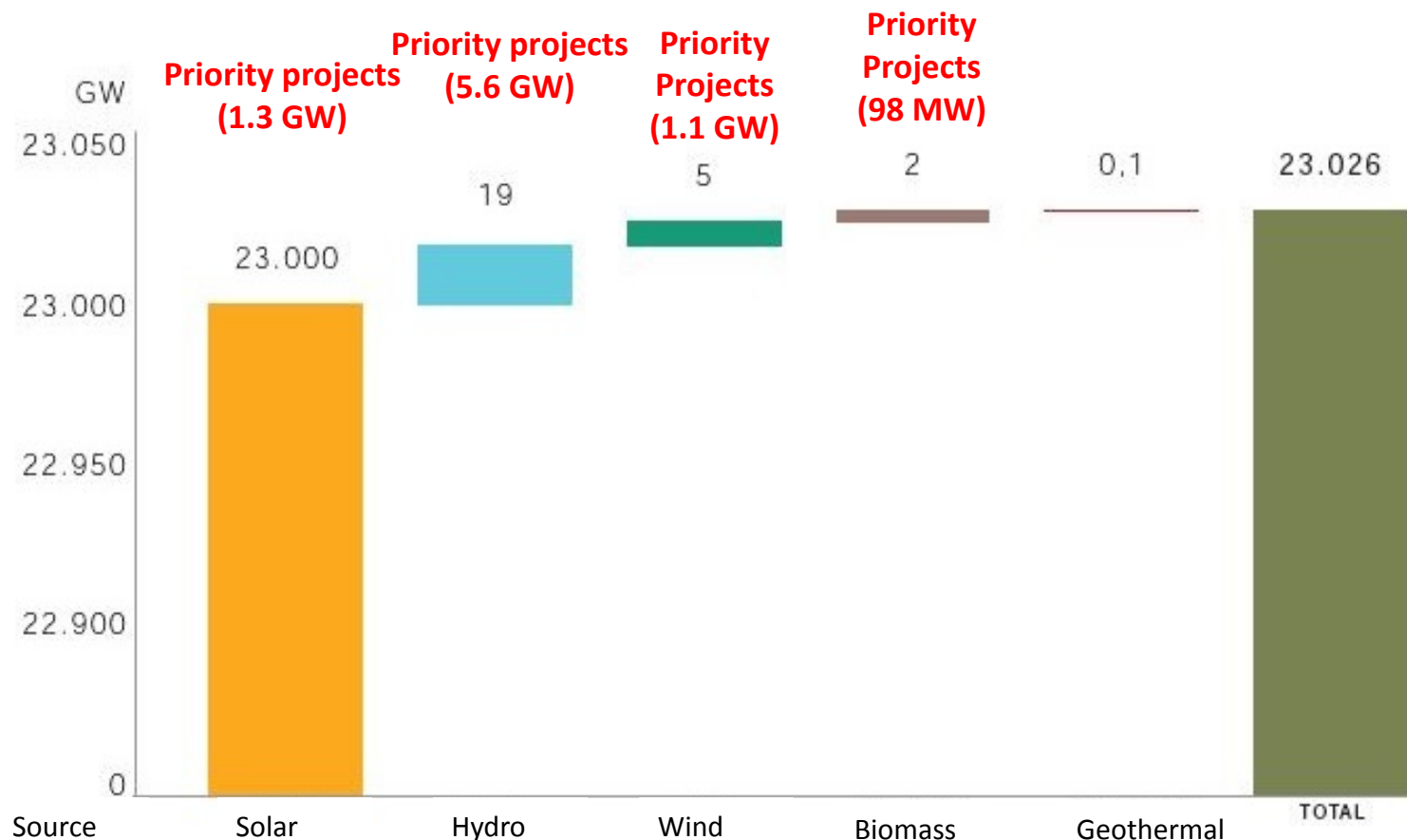


Source: REN21, 2015





# Total potential production of energy from renewable sources



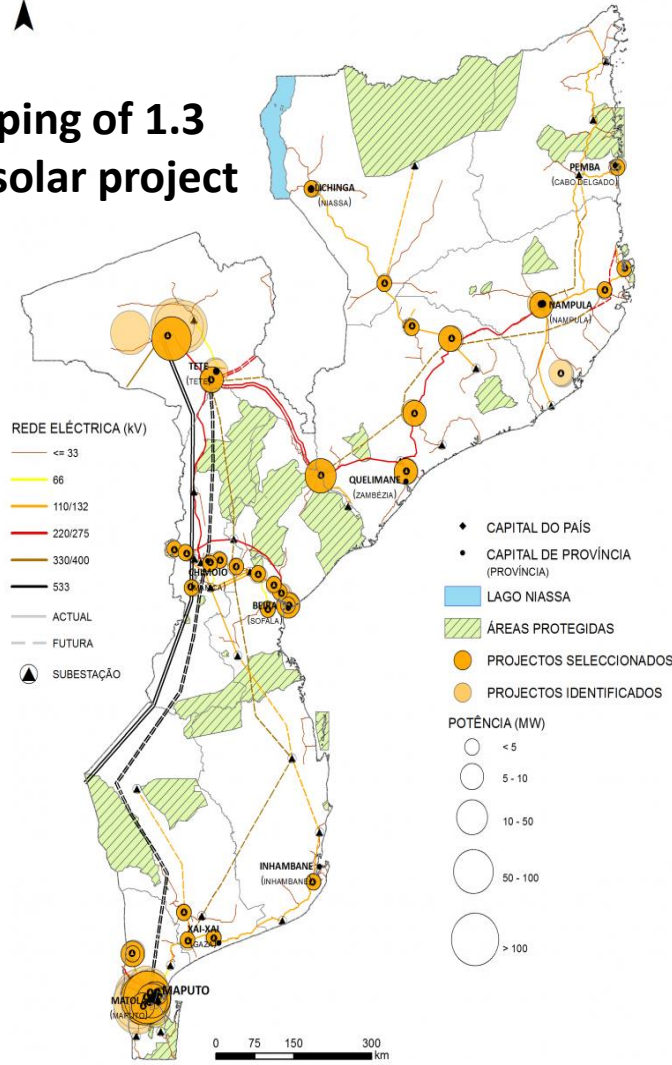
Source: [www.atlasrenovaveis.co.mz](http://www.atlasrenovaveis.co.mz)



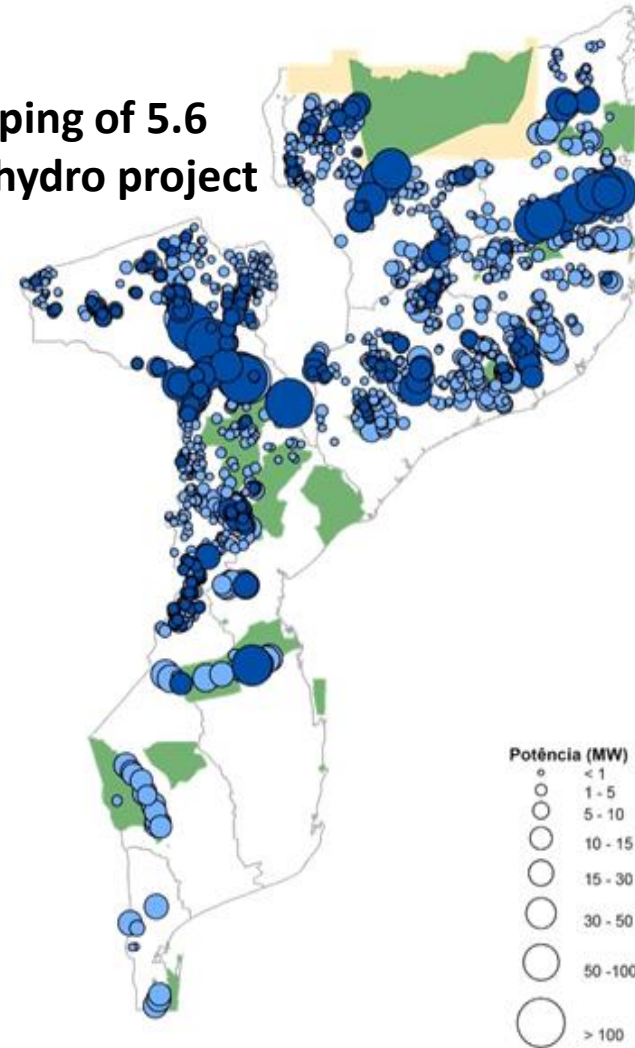
# The Renewable Energy Atlas and Mapping of Potential Projects



## Mapping of 1.3 GW solar project sites



## Mapping of 5.6 GW hydro project sites





# Renewable Energy Projects in Mozambique



## Solar

- 2 large scale projects (30 MW each)
- 30 organizations working with smaller scale solar projects



## Hydro

- 32 large scale projects (+10 MW) of which 20 in feasibility
- 45 small scale projects (- 0.5 MW)



## Wind

- 2 large scale projects (+ 30 MW each)
- No small scale projects



## Bioenergy

- 11 organizations working with biomass fuels/stoves
- 13 organizations working in Biofuels
- 6 organizations working with Biogas

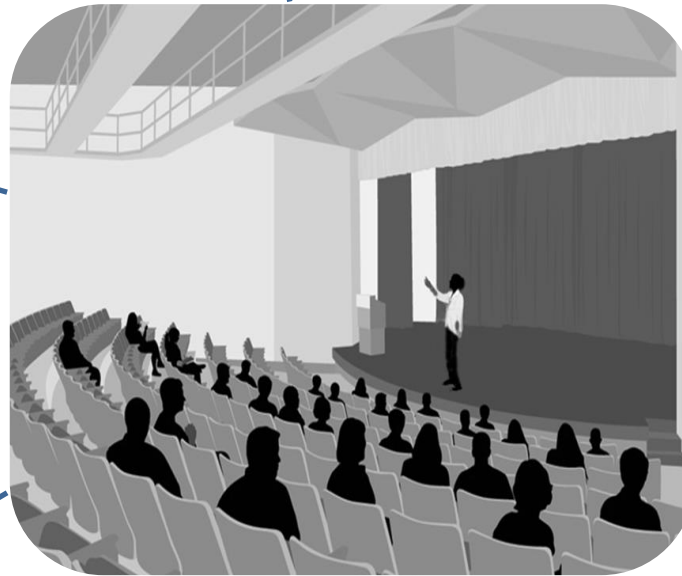


# Research and Development

University courses

Quality and certification laboratories

Workshops & seminars



Technical training

Research programs

# Thank you



**ALER**

Associação  
Lusófona  
de Energias  
Renováveis



For more information please contact:  
[boris@greenlight-info.com](mailto:boris@greenlight-info.com)