



Nexus of Sustainable Transport and Renewable Energy



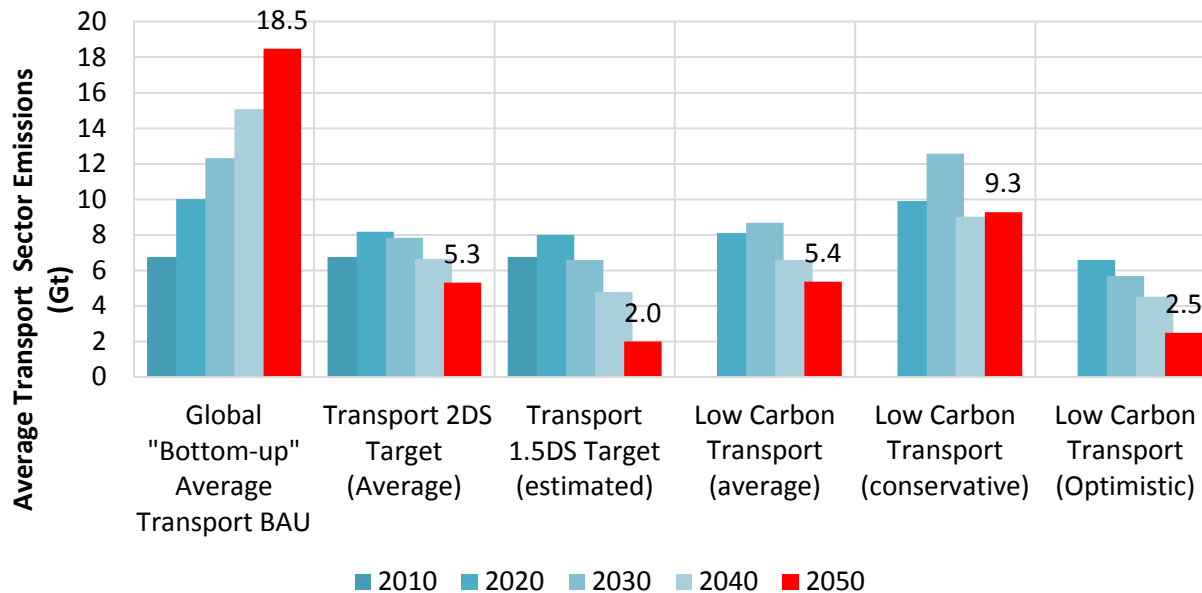
Holger Dalkmann

Interim Secretary-General, Partnership on Sustainable, Low Carbon Transport

21 June 2018

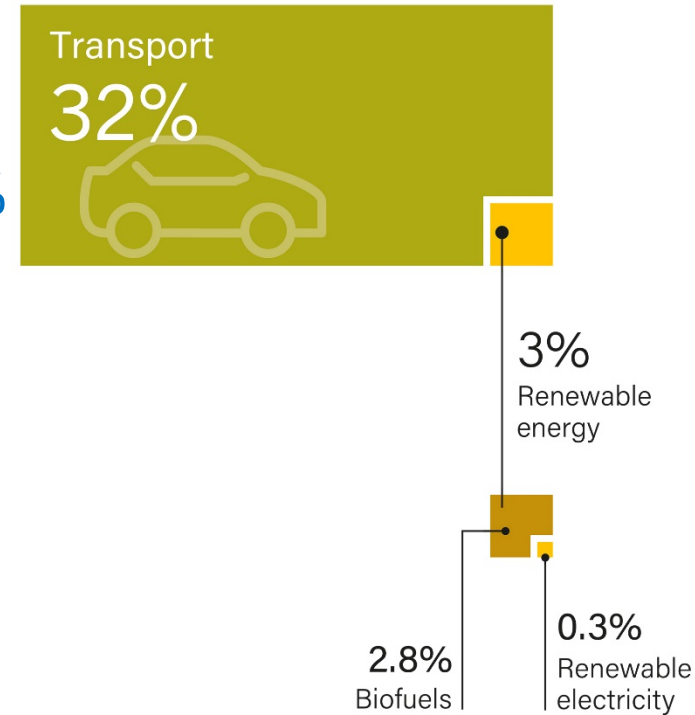
Transport Needs to Raise Ambition

- Findings of REN21 GSR 2018 shows that transport is lacking behind other sectors and more ambitious actions are needed
- Paris Agreement set the goals of limiting average global temperature increase to well below 2 degrees and strive to **1.5 degree Celcius**
- SLoCaT translated this target to the transport sector and identified that we need to achieve **2 Gt CO2 by 2050**
- low carbon transport activities need to be accelerated and new actions need to be stimulated



Transport and Renewable Energy

- Transport is responsible for 32% of total final energy consumption but renewable energy in transport accounts for only 3.1%
- 90% provided by **liquid biofuels**
- Use of **biogas** is very limited
- **Electrification** of transport is rising but it will only have climate benefits if the power comes from renewables

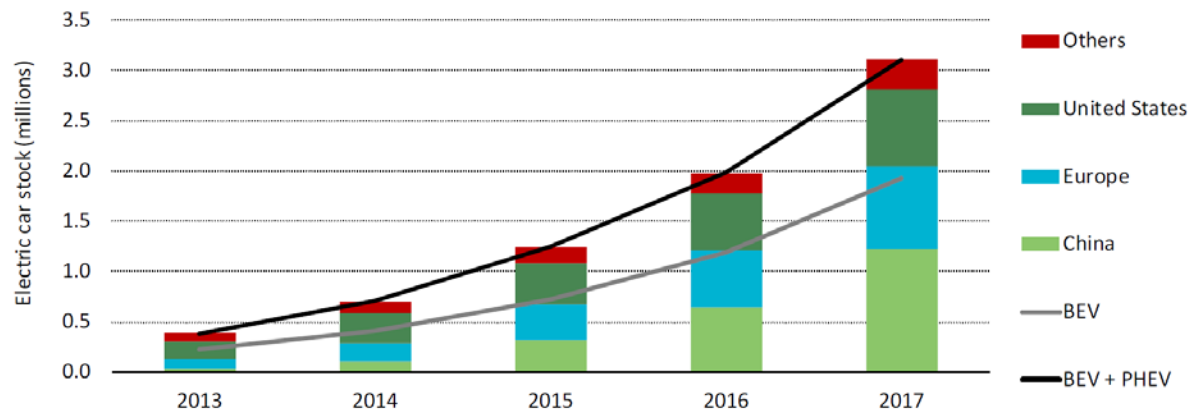


(Source: REN21, Renewables 2018
Global Status Report)

- ➔ Transport is the least diversified sector in terms of energy sources
- ➔ Success of energy transition will rely on transport decarbonization

Uptake of Electric Mobility

- Electrification of all transport modes is often seen as solution
- Examples of heavy and light rail supplied by renewable electricity can be found in the Netherlands, the cities of Delhi (India) and Santiago (Chile)
- Austria and Germany implemented policies to stimulate the use of renewable electricity in EVs through financial and fiscal incentives
- New milestone was reached in 2017: **3 million electric vehicles on roads** (only 0.3% of global vehicle fleet)

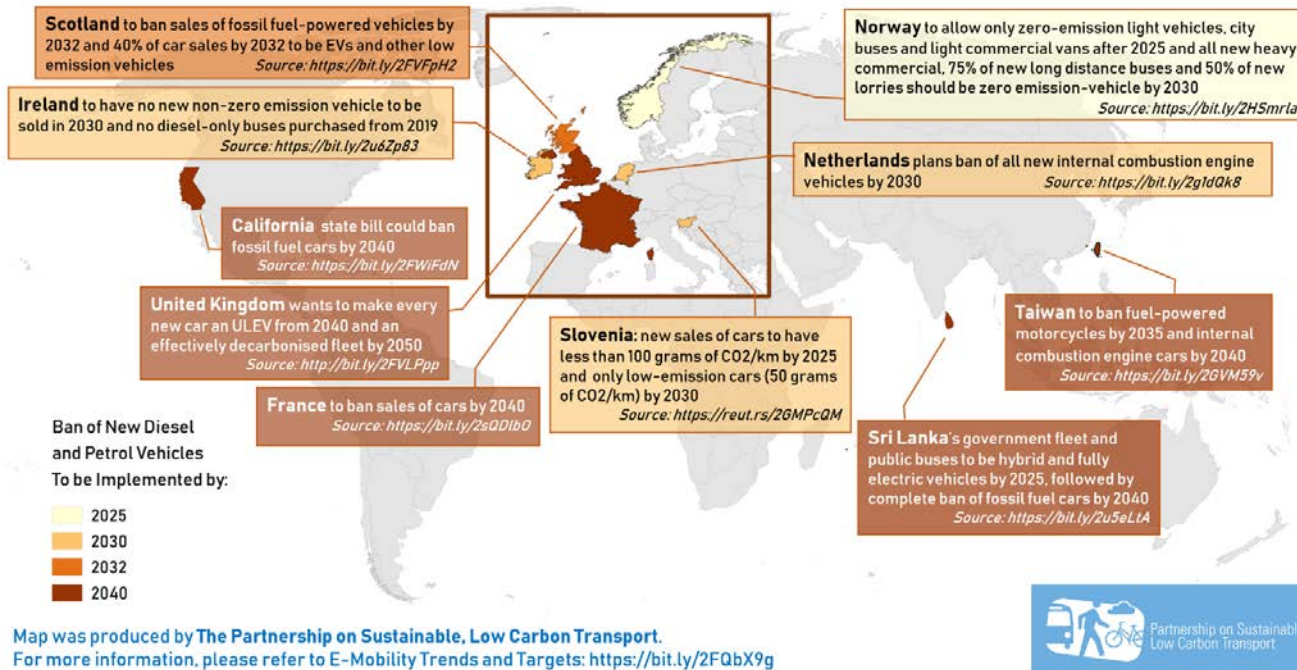


(Source: IEA Global EV Outlook 2018)



Countries Move Towards Phase-out of Fossil Fuel Vehicles

- SLoCaT maintains overview of targets and trends by countries, cities and companies as well as findings of market reports
- Identified that 61 countries, 64 cities and 28 companies are enhancing electrified mobility
- 6 countries in 2017 announced phase out of fossil fuel cars, adding to previous commitments made by Norway and others:

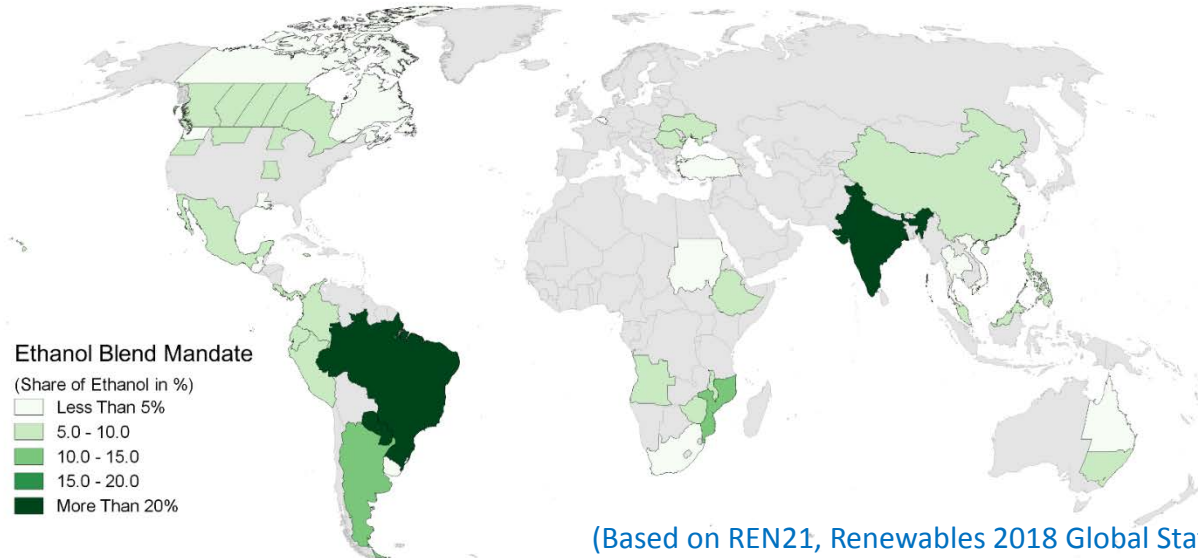


Our E-Mobility Overview is available here:
http://slocat.net/sites/default/files/e-mobility_overview.pdf

Importance of Biofuels

- 71 countries have enacted biofuel blending mandates on national or subnational level
- **Slow progress** due to policy uncertainties of biofuels feedstocks (highlighted in Box 2 of GSR) and slow deployment of new technologies (for example in biojet fuels for aviation)
- Advanced biofuels are enacted by Denmark, Italy and USA

Countries with Ethanol Blend Mandates



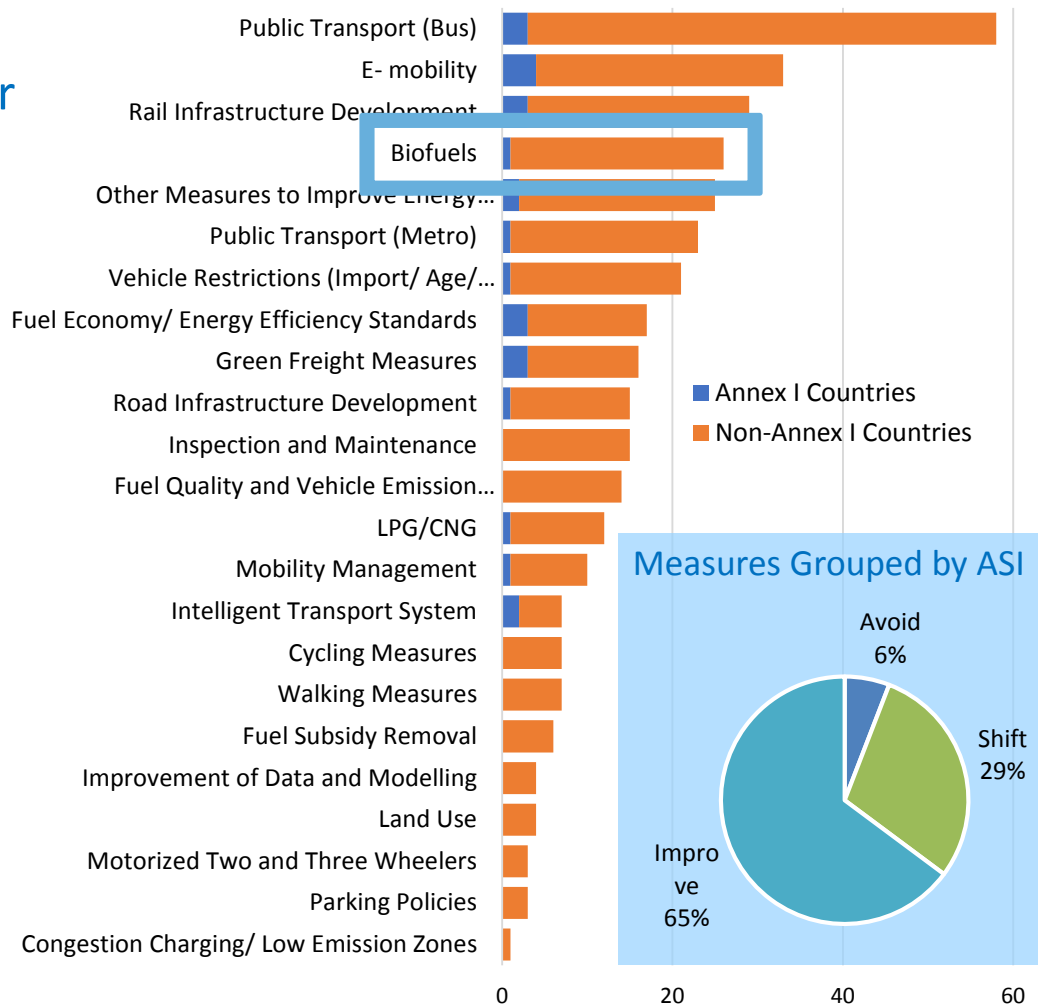
G20 Activities: The need for a transport and energy transition

	National programmes to support shift to public transport	Measures to support low-carbon freight logistics	National-level measures to support new mobility services	National measures to support non-motorised transport	Road charges	Energy/carbon emission standards LDV	Energy/carbon emission standards HDV	Pricing instruments	Mandatory vehicle labelling	Support mechanism for electric vehicles & charging infrastructure	Mandatory biofuel targets	Support for other low-carbon fuels and propulsion systems
Argentina	●	●			●						●	●
Australia		●		●					●	●		●
Brazil	●	●				●				●	●	●
Canada		●				●	●	●	●		●	●
China	●	●			●	●	●	●	●	●		●
European Union	●	●		●		●		●	●		●	●
France	●	●		●	●	●		●	●	●	●	●
Germany		●	●	●	●	●		●	●	●	●	●
India	●	●		●		●			●	●	●	●
Indonesia	●			●	●			●			●	●
Italy					●	●			●	●	●	●
Japan	●	●			●	●	●	●	●	●		●
Korea, Rep.	●	●	●	●		●		●	●	●	●	●
Mexico	●	●			●	●		●		●	●	●
Russian Federation	●	●			●			●				●
Saudi Arabia	●	●				●			●			
South Africa	●				●				●		●	
Turkey	●	●		●	●				●	●	●	
United Kingdom	●			●	●	●	●	●	●	●	●	●
United States	●	●	●	●		●	●	●	●	●	●	●

Holistic Approach is required for Transport Transition

- 75% of NDCs submitted highlight transport as a mitigation source
- Few NDCs have a transport sector GHG mitigation target
- E-mobility and biofuels are regarded as major measures
- But holistic approach is needed!
- Balance between measures that:
 - **Avoid** motorized transport
 - **Shift** to environmentally friendly modes
 - **Improve** efficiency of current transport modes

Transport Mitigation Measures identified in NDCs



Key Messages on Transport

- Transport is lacking behind other sectors, needs to step up through comprehensive action and support of other sectors
- Transport needs:
 - Clean energy (alternative fuels, electrification + renewable energy)
 - Less energy consumption (substitute shorter trips with walking and cycling, longer trips with public transport)
 - More energy efficiency (better fuel economy standards)

Thank you for your attention!

For more information, visit our website:

<http://slocat.net/>

<http://www.ppmc-transport.org/>

Follow us on Twitter: **@SLoCaTOfficial**

Facebook: **@SLoCaTOfficial**



Partnership on Sustainable
Low Carbon Transport

SLoCaT Partnership



90+ Members: International Organizations – Governments – Development Banks – NGOs – Private Sector – Academe

Mission: Integrate Sustainable Transport in Global Policies on Sustainable Development and Climate Change and Leveraging Action in Support of the Implementation of the Global Policies.

Diamond Supporters



Platinum Supporters



Gold Supporters

